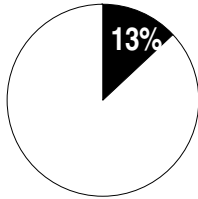


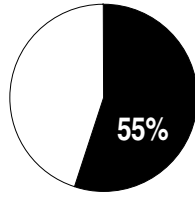
Teen Parent Connection: 2005 Report Card

August, 2005

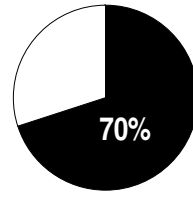
Families that Began with a Teen Birth in Hennepin County



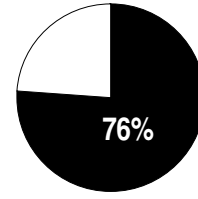
13% of all families in Hennepin County began with a teen birth¹



55% of Long Term MFIP (welfare) families began with a teen birth²



70% of Delinquents Under Age 10 come from families that began with a teen birth³



76% of the 200 Most Costly Families began with a teen birth⁴

¹ Estimated from Hennepin County birth statistics through 2003.

² Source: DHS Warehouse/MAXIS. Calculated by Hennepin County.

³ Source: *Delinquents Under 10 in Hennepin County: A Statistical Analysis and Practices and Experiences of Police Jurisdictions*, Hennepin County Attorney's Office, December, 1995.

⁴ Source: *200 Families, A Foundation for a Reform in Process*, Hennepin County Community Services Group, 1999.

How Many Teen Parent Families are there?

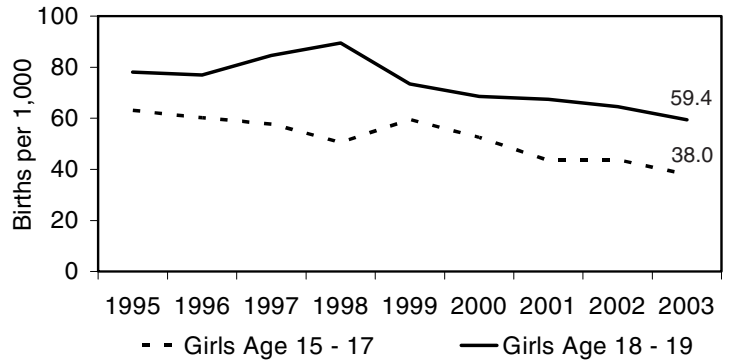
In **Minneapolis** in 2003 there were an estimated **1,400 families headed by teen mothers**, with a total of **1,700 children**. In 2003, 662 Minneapolis girls gave birth and another 400 girls were pregnant but not due until 2004. The rest of the teen families in Minneapolis began prior to 2003.

In **Suburban Hennepin County** in 2003 there were an estimated **1,000 families headed by teen moms**, with a total of **1,100 children**. In 2003, 437 suburban Hennepin girls gave birth and another 250 girls were pregnant but not due until 2004. The rest of the teen families in suburban Hennepin began prior to 2003.

These estimates are probably low because they are based only on births in the county – it is not possible to track teen families who move to Hennepin with their children.

Birth Rates to All Teens Are Falling in Minneapolis

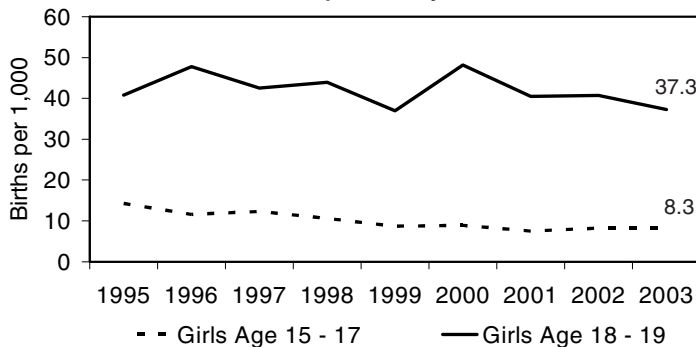
Teen Births per 1,000 Teen Women in Minneapolis, 1995 – 2003



Source: Minnesota Center for Health Statistics.

Birth Rates to Younger Teens are Falling in Suburban Hennepin County

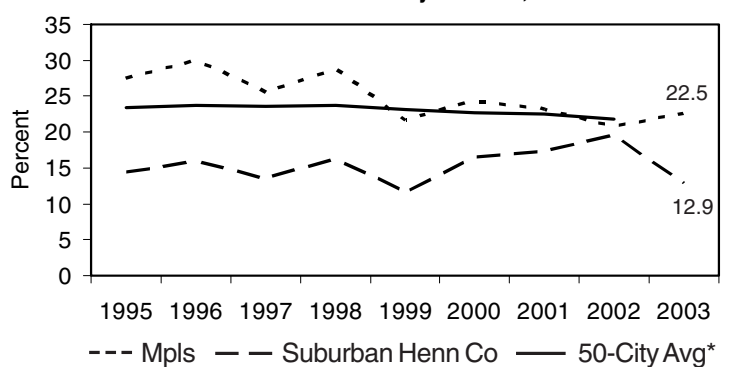
Teen Births per 1,000 Teen Women in Suburban Hennepin County, 1995 – 2003



Source: Minnesota Center for Health Statistics.

Since 1995 Repeat Teen Births are Falling as a percent of All Teen Births in Minneapolis

Births to Teens who were Already Mothers, 1995 – 2003



Source: Minnesota Center for Health Statistics.

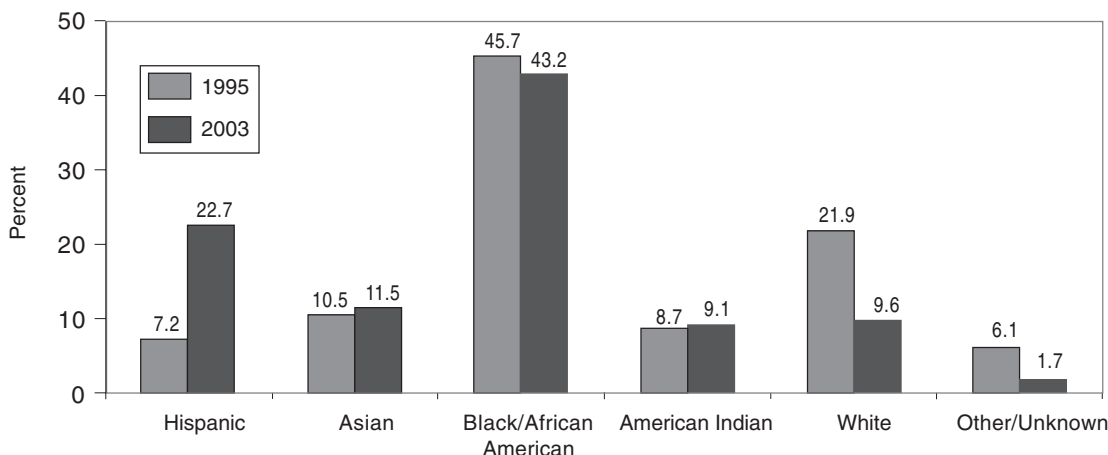
*Source: The Annie E. Casey Foundation.

The Right Start City Trends: KIDS COUNT Special Report. Baltimore, MD: 2004.

Teen Parent Profile

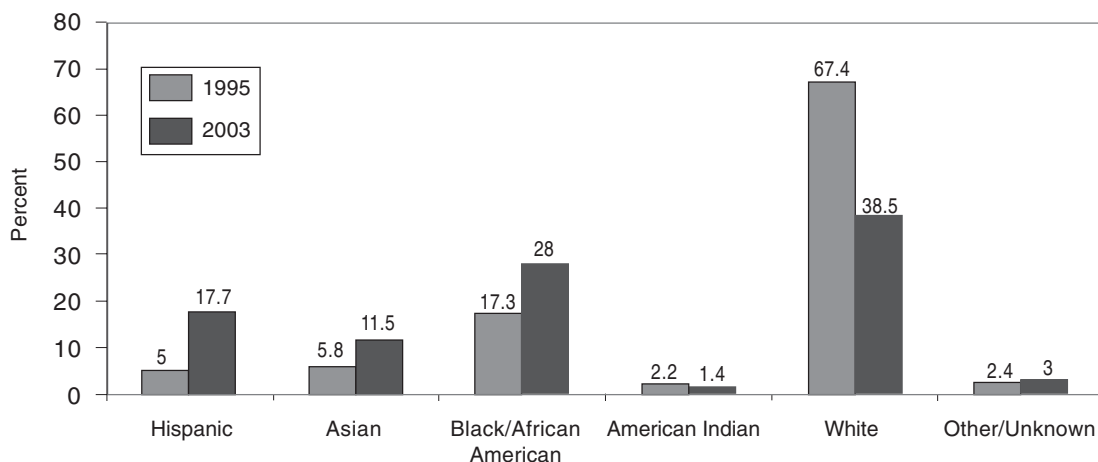
Race/ethnicity of teen mothers who gave birth in Minneapolis, 1995 and 2003

The proportion of teen births to Hispanic mothers has risen significantly in Minneapolis.



Race/ethnicity of teen mothers who gave birth in Suburban Hennepin County, 1995 and 2003

The proportion of teen births to Hispanic, Asian, and African American mothers has risen in Suburban Hennepin County.



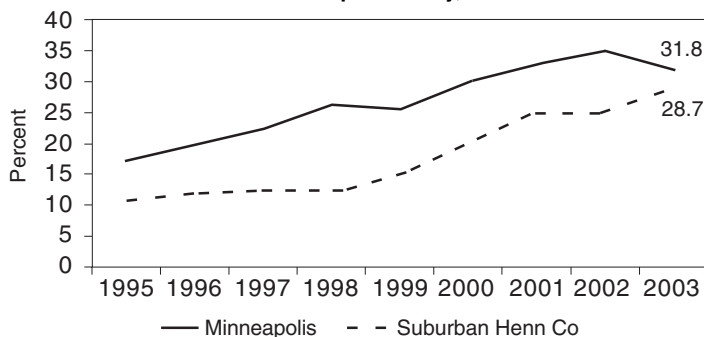
Source: Minnesota Center for Health Statistics.

Data for White, American Indian, Asian, and African American races exclude individuals reporting Hispanic ethnicity. Hispanic mothers are recorded in their own category.

Teen Mother Country of Origin Changing

The proportion of teen mothers who were themselves born outside the US is rising.

Percentage of Teen Births to Foreign-Born Mothers in Minneapolis and Suburban Hennepin County, 1995 – 2003



Source: Minnesota Center for Health Statistics.

Teens more Likely to have Low Birthweight Babies

In **Minneapolis** in 2003 there were **97 babies** born weighing **less than 5.5 lbs** born to teen mothers – low birth weight babies were 11.4% of all babies born to Minneapolis teens that year.

In **Suburban Hennepin County** in 2003 there were **36 babies** born **weighing less than 5.5 lbs.** born to teen mothers – low birth weight babies were 7.8% of all babies born to suburban Hennepin teens that year.

Low birth weight babies face more health and developmental risks than babies born at healthy weight. In 2003 **teen moms** in Hennepin County **were 46% more likely to have a low birth weight baby** than mothers ages 20 or over.

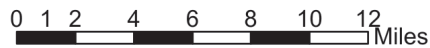
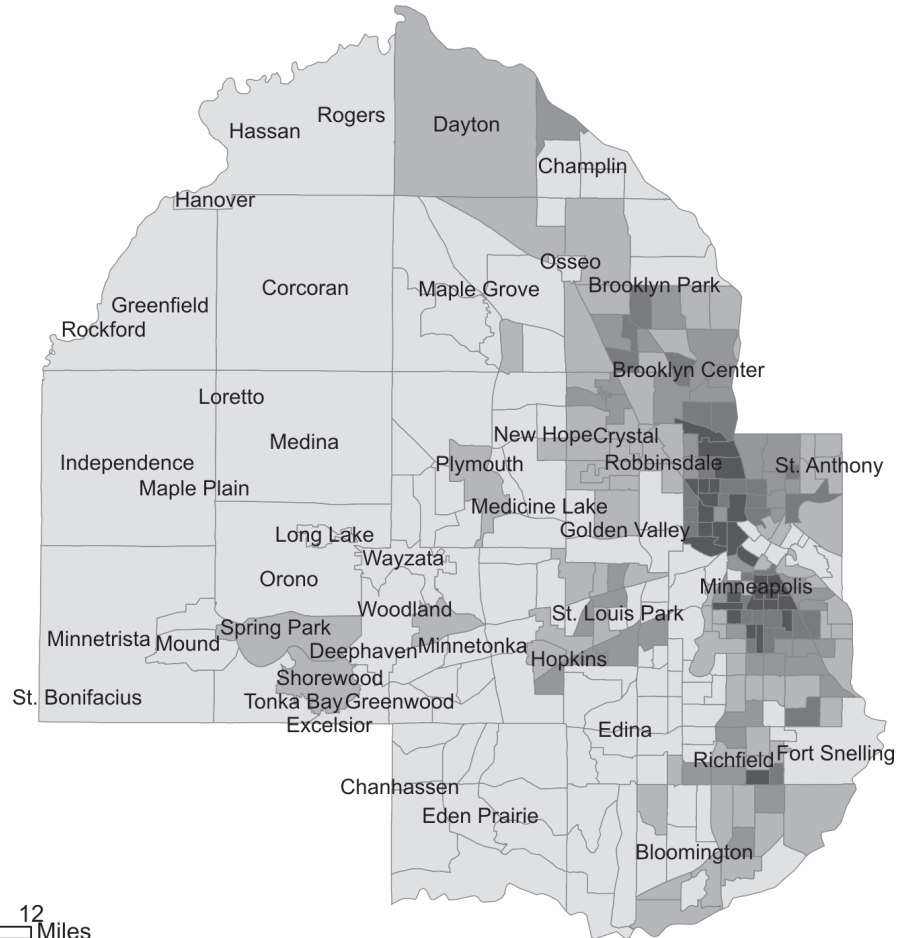
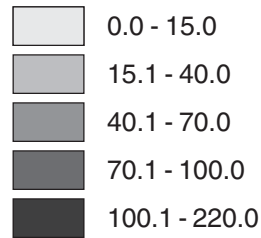
Teen Parent Service Use

School Enrollment	Nurse Home Visiting	Child Care
<p>Minneapolis Public Schools enrolled 778 pregnant and parenting teens in the 2003-2004 school year, not including contracted alternative schools or private or charter schools. In suburban Hennepin County, School District 287 enrolled 128 pregnant and parenting teens in programs for teen parents during the 2003-2004 school year. These enrollment numbers are very similar to the prior year.</p>	<p>593 Minneapolis teen parents got parenting education and help returning to school from home visiting nurses in 2004 (475 in 2003). Public health nurses visited 116 teen parents in Bloomington, Richfield and Edina, (108 in 2003) and an additional 143 teen parents in other suburban areas of Hennepin County (116 in 2003).</p>	<p>444 Minneapolis teen mothers received child care assistance in 2004 (compared to 486 in 2003). In suburban Hennepin County, 251 teen mothers received child care assistance in 2004 (compared to 239 in 2003). Though most of the children of teens were enrolled in licensed care, 1 in 6 were in legal unlicensed family care.</p>
<p>Public Assistance</p> <p>1570 Minneapolis pregnant or parenting teens and 794 suburban pregnant or parenting teens received public assistance at some time during 2004. Two-thirds of these families received cash assistance along with other benefits, while one-third received health and/or food assistance only.</p>	<p>Case Management Services</p> <p>415 Minneapolis teen mothers and 168 suburban teen mothers used Hennepin County adolescent parent case management services during 2004, compared to 563 in Minneapolis and 134 in suburban Hennepin in 2003.</p>	<p>School Readiness</p> <p>123 children of teen mothers in Minneapolis were served by Way to Grow –Teen Age Pregnancy and Parenting Program (TAPPP) in 2004, compared to 748 in 2003. This decrease was due to a restructuring of the Way to Grow program. Head Start served children of 28 teen parents, compared to 14 in 2003.</p>
<p>WIC Nutrition Program</p> <p>836 pregnant Minneapolis teens and 1066 postpartum Minneapolis teen mothers were on Women, Infants, and Children (WIC) in 2004, while 443 pregnant teens and 571 postpartum teen mothers in suburban Hennepin County received WIC in 2004. The numbers are higher than those reported in 2003 due to enhanced tracking methodology.</p>	<p>Parenting Support</p> <p>296 teen parents attended Minneapolis Public Schools Early Childhood Family Education classes compared to 457 the year before, while 520 pregnant or parenting teens attended parent education classes in the Minneapolis schools in the 2003-2004 school year, compared to 465 the year before. Many of these parents do both. 599 teen mothers and 143 fathers of children born to teens received parenting education in Minneapolis hospitals in 2004.</p>	<p>Fathers of Babies Born to Teens</p> <p>In 2004, there were 1,488 teen mothers in the Hennepin County child support system. There was a legal father associated with a little more than half (54%) of these mothers. About one in 5 (21 percent) of these 859 fathers are themselves teens; 63 percent are in their 20's, and the remaining 16 percent are thirty or older.</p>

Place of Residence of New Teen Moms

Teen Birth Rate per 1,000 Women Age 15-19, 1999-2001

Births per 1,000 girls age 15 - 19



Source: U.S. Census 2000, Minnesota Department of Health
Prepared by: Hennepin County Human Services Department 4/16/2004



Teen Parent Connection

Teen Parent Connection participating organizations, including the City of Mpls, Mpls Public Schools, Hennepin County and many others, have signed the Teen Parent Connection Memo of Agreement (MOA) committing to work together to identify all teen parent families in Hennepin County and get them connected to school/work, parenting support, and high quality early childhood experience. We seek to enhance the chances for teen family success while reducing repeat teen pregnancy and teen pregnancy in the next generation.

Get access to coordinated services and supports for pregnant and parenting teens and their children by calling 612-668-1881 or sending an email to teenparentconnection@yahoo.com.

This report is available on-line at: www.ci.minneapolis.mn.us/dhfs and click on 'Research and Policy'.

If you need this document in an alternative format, please call (612) 673-2301 or TTY (612) 673-2157 (General City Information). Please allow a reasonable amount of time for special needs accommodation.

Prepared by: Hennepin County Human Services and Public Health Department
Minneapolis Department of Health and Family Support
Minneapolis Public Schools

For more information about this report, please contact Dave Johnson,
Minneapolis Department of Health and Family Support, at (612) 673-3948.